

Features

- Single faucet hole.
- Oval basin.
- Overflow drain.
- Left-hand hole drilled for soap or lotion dispenser.
- Includes wall hanger.

Material

- Vitreous china.

Installation

- Wall-mount
- Drilled for concealed arm carrier installation.

Optional Accessories

- K-1998 Shroud
- K-8998 P-Trap

Components

- Additional included component/s: Hanger (2 required).



ADA CSA B651 OBC

Codes/Standards





ASME A112.19.2/CSA B45.1
ADA
ICC/ANSI A117.1
CSA B651
OBC

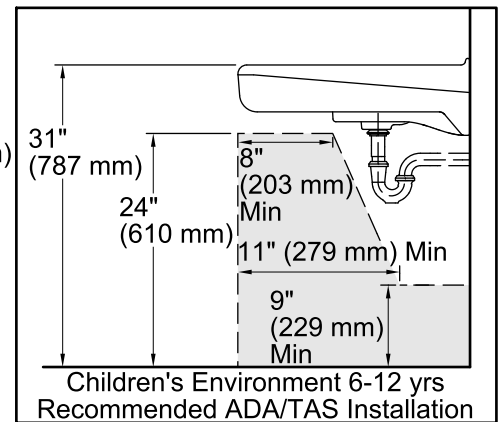
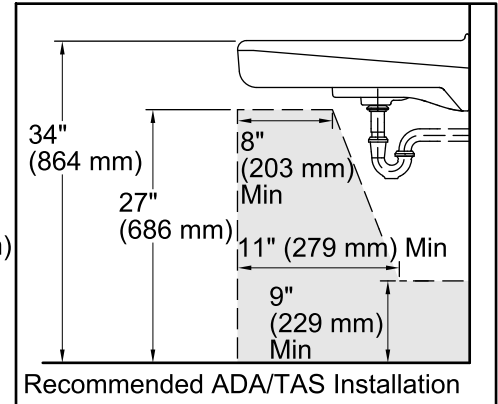
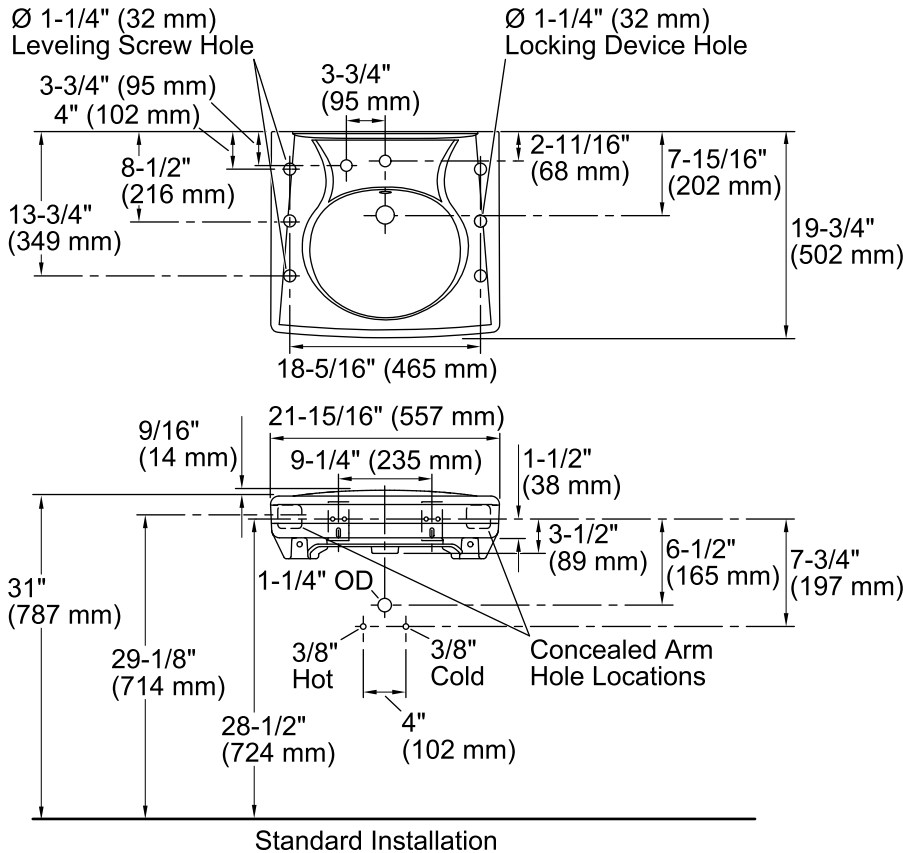
KOHLER® One-Year Limited Warranty

See website for detailed warranty information.

Available Color/Finishes

Color tiles intended for reference only.

Color	Code	Description
	0	White
	96	Biscuit
	47	Almond
	7	Black Black™



Technical Information

All product dimensions are nominal.

Bowl configuration:	Single
Installation:	Wall-mount
Bowl area (Only)	Length: $14\text{-}3/8\text{''}$ (365 mm) Width: $12\text{-}5/16\text{''}$ (313 mm) With overflow: Yes Water depth: $3\text{-}1/4\text{''}$ (83 mm)
Bowl area	With overflow: Yes
Number of deck holes:	2
Faucet hole(s):	$1\text{-}3/8\text{''}$ (35 mm)
Soap/Lotion hole:	$1\text{-}1/4\text{''}$ (32 mm)
Drain hole:	$1\text{-}3/4\text{''}$ (44 mm)

Notes

Install this product according to the installation instructions.

ADA, OBC, CSA B651 compliant when installed to the specific requirements of these regulations.